



# THE PULLING AID - CABLE PULLING TECHNOLOGY

Clean construction site - clean laying. Our cable pulling technology ensures that all cables are cleanly rolled in and out. No parts not required left lying around. No awkward handling. Greenlee pulling systems are made from high-quality ABS plastic. Making them robust and drop-proof. You are in control: Reliable laying with safe cable pulling technology.



#### In brief

- ▶ Simple pulling through of cables and conductors
- ▶ Cable puller made from polyester, perlon, nylon, steel and fibreglass
- ▶ Cable pulling rods for cavities and suspended ceilings
- ▶ Made from high-quality ABS plastic
- ▶ Solutions for light and heavy cable types, angled ducts or long straights

**► The Dura Spinner**

The Dura Spinner is small, but has a great effect. High-quality materials ensure robustness and the best functionality. Its user-friendly design also permits unwinding on the floor. The Dura Spinner is even able to hold in place cables that are laid around corners. A genuine help on the construction site.

- ABS plastic housing
- Cable puller made from virtually indestructible polyester tape
- Simple unwinding and rewinding
- Unwinding even on the floor
- User-friendly design ensures convenient and smooth operations



### Polyester fish tape green 4.5 mm dia.



- ▶ 50% less friction than nylon tapes
- ▶ Extremely flexible and almost unbreakable

#### Characteristics

- High thrust due to twisted tape design
- Reduces the pulling force due to much lower friction
- Replaceable pulling eyelet and spring guide head

#### Additional information

- Further detailed information can be found in the application table on page i-12

Length	Part No.	Diameter mm
10 m	52055292	4.5
15 m	52055293	4.5
20 m	52055294	4.5
25 m	52055295	4.5
30 m	52055296	4.5
Accessory	Part No.	
5-piece accessory set for polyester fish tapes	52055396	

### Perlon® fish tape 4 mm dia.



#### Characteristics

- With pressed M4 front piece
- With unscrewable spring guide head and pulling eyelet

#### Additional information

- Further detailed information can be found in the application table on page i-12

Length	Part No.	Diameter mm
5 m	52055276	4
10 m	52055277	4
15 m	52055278	4
20 m	52055279	4
25 m	52055280	4
30 m	52055281	4
Accessory	Part No.	
Replacement parts for Perlon fish tapes, comprising pulling eyes WW 1/2" (1) and spring guide head M4 (1)	52055288	

### Nylon fish tape 4 mm dia.



#### Characteristics

- With pressed spring guide head and eyelet

#### Additional information

- Further detailed information can be found in the application table on page i-12

Length	Part No.	Diameter mm
5 m	52055270	4
10 m	52055271	4
15 m	52055272	4
20 m	52055273	4
25 m	52055274	4
30 m	52055275	4

## Steel fish tape 4 mm dia.



### Characteristics

- With pressed spring guide head and eyelet

### Additional information

- Further detailed information can be found in the application table on page i-12

Length	Part No.	Diameter mm
5 m	<b>52055282</b>	4
10 m	<b>52055283</b>	4
15 m	<b>52055284</b>	4
20 m	<b>52055285</b>	4
25 m	<b>52055286</b>	4
30 m	<b>52055287</b>	4

## Flex-O-Twist™ speed flex leader

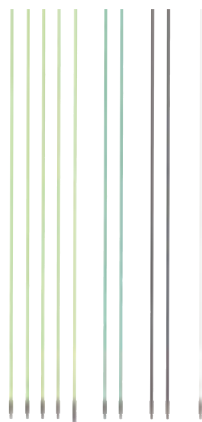


### Characteristics

- Especially suitable for sharp bends
- Flexible fish tape leader

Length	Part No.
300 mm	<b>50308599</b>

## Fibreglass cable pulling rods



### Characteristics

- Almost unbreakable due to special outer jacket
- Time-saving cable laying
- Laying also under the most difficult conditions

### Suitable for

- Cable installation and laying
- Pulling or pushing

Length	Part No.	Version
10 m	<b>52055385</b>	Comprising of: 4 pce. light green fibreglass rods 5.6 mm dia. with WW connecting sleeve, 1 pce. light green fibreglass rod 5.6 mm dia. with WW connecting sleeve and universal joint, 2 pce. black fibreglass rods 6 mm dia. with WW connecting sleeve, 1 pce. white nylon rod 4 mm dia. with WW connecting sleeve, 2 pce. green fibreglass rods 4.6 mm dia. with WW connecting sleeve
5 m	<b>52055386</b>	Consists of: 3 pce. light green fibreglass sticks 5.6 mm dia. with WW connecting bushing, 1 pce. black fibreglass stick 6 mm dia. with WW connecting bushing, 1 pce. white nylon stick 4 mm dia. with WW connecting bushing
Accessories	Part No.	
Accessory set for cable pulling rods, 8-pcs.	52055387	
Accessory set for cable pulling rods, 4-pcs.	52055388	



### Dura Spinner polyester fish tape system



#### Characteristics

- Thin and extremely robust fish tape
- Uncoiling also possible on the floor
- Unique, user-friendly design
- Goes into every corner and holds every cable

#### Suitable for

- The laying of additional cables

Item	Part No.
Dura Spinner 3.8 mm dia., 20 m	<b>52074600</b>
Dura Spinner 3.8 mm dia., 30 m	<b>52074650</b>
Scope of supply	Part No.
Dura Spinner accessory kit, 3 pieces	52074653
Accessories	Part No.
Dura Spinner spare fish tape 3.8 mm dia., 20 m	52074651
Dura Spinner spare fish tape 3.8 mm dia., 30 m	52074652

### Flexi Spinner polyester cable pulling system



- ▶ **Almost unbreakable**
- ▶ **Approx. 50 % less frictional resistance compared with nylon and perlon**
- ▶ **High thrust for long distances with narrow bending radius**

#### Characteristics

- Highly-flexible polyester tape
- Modern design
- Robust housing

#### Additional information

- Further detailed information can be found in the application table on page i-12

Item	Length	Part No.	Diameter mm
Flexi Spinner polyester cable pulling system	20 m	<b>52055389</b>	4.5
Flexi Spinner polyester cable pulling system	25 m	<b>52055390</b>	4.5
Flexi Spinner polyester cable pulling system	30 m	<b>52055391</b>	4.5
Flexi Spinner, winder case empty		<b>52055392</b>	
Scope of supply	Part No.	Quantity	
5-piece accessory set for polyester fish tapes	52055396	1	
Accessories	Part No.	Page	
Polyester fish tape green 4.5 mm dia., 20 m	52055294	560	
Polyester fish tape green 4.5 mm dia., 25 m	52055295	560	
Polyester fish tape green 4.5 mm dia., 30 m	52055296	560	

## Speedy Spinner fibreglass cable pull-in system



- ▶ Unique, user-friendly design
- ▶ Very simple and quick pulling in and out of fibreglass tapes

### Characteristics

- One-handed operation
- Uncoiling also possible on the floor
- Flexible fibreglass spring for quick pulling in and out
- High thrust
- Accessory set supplied as standard

### Suitable for

- Tube diameter: 16 - 32 mm

### Additional information

- Further detailed information can be found in the application table on page i-12
- Always order repair adhesive separately!

Item	Diameter mm	Length	Part No.
Speedy Spinner fibreglass cable pull-in system	3	20 m	<b>52055298</b>
Speedy Spinner fibreglass cable pull-in system	3	30 m	<b>52055299</b>
Speedy Spinner fibreglass cable pull-in system	3	40 m	<b>52055300</b>
Scope of supply		Part No.	Quantity
Head with eye M5		52055304	3
Spring guide head with eye M5		52055305	1
Spring guide head with eye M5 - 10 mm		52055306	1
Start/bushing sleeves M5		52055308	3
Connecting sleeves		52055309	3
Cable grip M5, 4-15 mm dia.		52055310	1
Pulling aid for pulling system 3 - 6 mm dia.		52055311	1
Accessories			Part No.
Speedy Spinner accessory, repair patch for fibreglass tape 3 mm dia.			52055312
Fibreglass replacement tape 3 mm dia., 20 m			52055289
Fibreglass replacement tape 3 mm dia., 30 m			52055290
Fibreglass replacement tape 3 mm dia., 40 m			52055291
Speedy Spinner repair set, 10-piece			52055303

Item repair set	Part No.	
Speedy Spinner repair set, 10-piece	52055303	
Scope of supply repair set		
Part No.	Quantity	
Head with eye M5	52055304	3
Start/bushing sleeves M5	52055308	3
Connecting sleeves	52055309	3
Pulling aid for pulling system 3 - 6 mm dia.	52055311	1

## EASILY FORGOTTEN:

Be aware of the laying temperatures of cables and conductors!  
 These can be obtained from manufacturer's data sheets.  
 For a NYM conductor, for example, this temperature is +5° C.



### MagnumPRO™ oil-hardened steel fish tape



#### Characteristics

- Winder case eases cable pulling
- Dirt-free tape finish
- High impact nylon winder case with large handle grip

Item	Tape dimensions mm	Length	Part No.
MagnumPRO™ oil-hardened steel fish tape	3.2 x 1.5	19.8 m	<b>52041709</b>
MagnumPRO™ oil-hardened steel fish tape	6.4 x 1.5	30.5 m	<b>52041745</b>
MagnumPRO™ oil-hardened steel fish tape	3.2 x 1.5	38.1 m	<b>52041741</b>
MagnumPRO™ oil-hardened steel fish tape	3.2 x 1.5	73.2 m	<b>52041743</b>
Accessories			Part No.
Rotating head eye for 3 mm fish tapes			50293672
MagnumPRO™ oil-hardened steel fish tape 60 m			52044594

### MagnumPRO™ stainless steel fish tape



- ▶ **Stainless, speed flex leader**
- ▶ **Slim pulling eyelet permits trouble-free pulling in long and winding conduits**

#### Characteristics

- Can be used in conjunction with every steel fish tape with a tape dimension of 3.0 x 1.5 mm
- High impact nylon winder case with large handle grip

Item	Tape dimensions mm	Length	Part No.
MagnumPRO™ stainless steel fish tape	3.2 x 1.5	30.5 m	<b>52041746</b>
MagnumPRO™ stainless steel fish tape	3.2 x 1.5	61 m	<b>52041747</b>
Accessory			Part No.
Speed Flex leader for fish tapes with tape dimension 3.0 x 1.5 mm			50143921

### MagnumPRO™ nylon fish tape



- ▶ **Non-conductive, non-coiling nylon tape**

#### Characteristics

- Diameter 4.8 mm
- High impact nylon winder case with large handle grip

Item	Diameter mm	Length	Part No.
MagnumPRO™ nylon fish tape	4.8	15.2 m	<b>52041750</b>
MagnumPRO™ nylon fish tape	4.8	30.5 m	<b>52041751</b>
Accessory			Part No.
Replacement tip			50016644

## MagnumPRO™ fish tape



### Characteristics

- Fish tape from multi-strand steel tape
- Flexible type
- High impact nylon winder case with large handle grip

### Suitable for

- For quick and simple application

Item	Diameter mm	Length	Part No.
MagnumPRO™ fish tape	4.8	15.2 m	<b>52041748</b>
MagnumPRO™ fish tape	4.8	30.5 m	<b>52041749</b>

## MagnumPRO™ fibreglass fish tape



### Characteristics

- Non-conductive fibreglass tape with low friction coating
- To fish in small and large conduits even with wire or cable in place
- High impact nylon winder case with large handle grip

### Suitable for

- Data and telecommunication industry

Item	Diameter mm	Length	Part No.
MagnumPRO™ fibreglass fish tape	4.3	15.2 m	<b>52041752</b>
MagnumPRO™ fibreglass fish tape	4.3	30.5 m	<b>52041753</b>
MagnumPRO™ fibreglass fish tape	4.8	61 m	<b>50357468</b>
MagnumPRO™ fibreglass fish tape	4.8	76.2 m	<b>50357476</b>
Accessory			Part No.
Fibreglass fish tape accessory set			50357506
Pulling eyelet 3.0 mm			50359193
Pulling eyelet 4.8 mm			50359304

## Steel fish tape EZ Reach



### Characteristics

- With hand crank
- Flat steel tape for working above suspended ceilings, under carpets and through walls

Item	Tape dimensions mm	Length	Part No.
Steel fish tape EZ Reach	6.4 x 0.8	7.6 m	<b>50016962</b>





### Smart Butler fibreglass cable pulling-in system with steel reel basket



- ▶ Unique, user-friendly design, galvanised and sprayed
- ▶ Teflon-coated adapter for low resistance when winding and unwinding

#### Characteristics

- High thrust
- Low-friction unwinding and rewinding
- Secure working thanks to operative holding brake
- Effective working with accessories mounted directly on frame
- From size 790 mm dia. steel reel basket, incl. rollers

Item	Diameter mm	steel reel basket mm	Version	Length	Weight kg	Part No.
Smart Butler fibreglass cable pulling-in system 4.5 mm dia. with steel reel basket 330 mm dia. 40 m	4.5	330 dia.		40 m	4	<b>52055313</b>
Smart Butler fibreglass cable pulling-in system 330 mm dia. steel reel basket, 60 m	4.5	330 dia.		60 m	5	<b>52055315</b>
Smart Butler fibreglass cable pulling-in system 330 mm dia. steel reel basket, 80 m	4.5	330 dia.		80 m	6	<b>52055316</b>
Smart Butler fibreglass cable pulling-in system 550 mm dia. steel reel basket, 40 m	6.0	550 dia.		40 m	10	<b>52055325</b>
Smart Butler fibreglass cable pulling-in system 550 mm dia. steel reel basket, 60 m	6.0	550 dia.		60 m	11	<b>52055326</b>
Smart Butler fibreglass cable pulling-in system 550 mm dia. steel reel basket, 80 m	6.0	550 dia.		80 m	12	<b>52055327</b>
Smart Butler fibreglass cable pulling-in system 550 mm dia. steel reel basket, 100 m	6.0	550 dia.		100 m	12	<b>52055328</b>
Smart Butler fibreglass cable pulling-in system 660 mm dia. steel reel basket, 40 m	7.5	660 dia.		40 m	13	<b>52055337</b>
Smart Butler fibreglass cable pulling-in system 660 mm dia. steel reel basket, 60 m	7.5	660 dia.		60 m	14	<b>52055338</b>
Smart Butler fibreglass cable pulling-in system 660 mm dia. steel reel basket, 80 m	7.5	660 dia.		80 m	15	<b>52055339</b>
Smart Butler fibreglass cable pulling-in system 660 mm dia. steel reel basket, 100 m	7.5	660 dia.		100 m	17	<b>52055340</b>
Smart Butler fibreglass cable pulling-in system 660 mm dia. steel reel basket, 120 m	7.5	660 dia.		120 m	18	<b>52055341</b>
Smart Butler fibreglass cable pulling-in system 660 mm dia. steel reel basket, 40 m	9.0	660 dia.		40 m	14	<b>52055347</b>
Smart Butler fibreglass cable pulling-in system 660 mm dia. steel reel basket, 60 m	9.0	660 dia.		60 m	16	<b>52055348</b>
Smart Butler fibreglass cable pulling-in system 790 mm dia. steel reel basket, 80 m	9.0	790 dia.	incl. rollers	80 m	31	<b>52055349</b>
Smart Butler fibreglass cable pulling-in system 790 mm dia. steel reel basket, 100 m	9.0	790 dia.	incl. rollers	100 m	33	<b>52055350</b>
Smart Butler fibreglass cable pulling-in system 1000 mm dia. steel reel basket, 120 m	9.0	1000 dia.	incl. rollers	120 m	35	<b>52055351</b>
Smart Butler fibreglass cable pulling-in system 1000 mm dia. steel reel basket, 150 m	9.0	1000 dia.	incl. rollers	150 m	37	<b>52055352</b>
Smart Butler fibreglass cable pulling-in system 1000 mm dia. steel reel basket, 150 m	11.0	1000 dia.	incl. rollers	150 m	53	<b>52055359</b>
Smart Butler fibreglass cable pulling-in system 1000 mm dia. steel reel basket, 200 m	11.0	1000 dia.	incl. rollers	200 m	60	<b>52055360</b>
Smart Butler fibreglass cable pulling-in system 1000 mm dia. steel reel basket, 250 m	11.0	1000 dia.	incl. rollers	250 m	67	<b>52055361</b>
Smart Butler fibreglass cable pulling-in system 1000 mm dia. steel reel basket, 300 m	11.0	1000 dia.	incl. rollers	300 m	75	<b>52055362</b>

**Scope of supply**

4.5 / 6 mm dia.: Tension head with eyelet, pulling-in tape with pressed start/end sleeves, connecting sleeve WW 1/4"-M6, starting spinner with shackle

7.5 / 9 / 11 mm dia.: Tension head with eyelet, fish tape with pressed start/end sleeves, connecting sleeve WW 1/2"-M12, starting spinner with shackle

Accessories	Part No.	Accessory	Part No.
Smart Butler fibreglass replacement tape 4.5 mm dia., 40 m	52055317	Starter and end bushing WW 1/2" for fish tape 9 mm dia.	52055370
Smart Butler fibreglass replacement tape 4.5 mm dia., 60 m	52055318	Starter and end bushing WW 1/2" for fish tape 11 mm dia.	52055371
Smart Butler fibreglass replacement tape 4.5 mm dia., 80 m	52055319	Connecting sleeve for fibreglass 4.5 mm dia.	52055322
Smart Butler fibreglass replacement tape 6 mm dia., 40 m	52055329	Connecting sleeve for fibreglass 6 mm dia.	52055334
Smart Butler fibreglass replacement tape 6 mm dia., 60 m	52055330	Connecting sleeves for fibreglass tape 9 mm dia.	52055372
Smart Butler fibreglass replacement tape 6 mm dia., 80 m	52055331	Connecting sleeves for fibreglass tape 11 mm dia.	52055373
Smart Butler fibreglass replacement tape 6 mm dia., 100 m	52055332	Connecting sleeve WW 1/2" with rotary swivel	52055374
Smart Butler fibreglass replacement tape 7.5 mm dia., 40 m	52055342	Bulb with shackle WW 1/4" for 4.5 mm dia.	52055323
Smart Butler fibreglass replacement tape 7.5 mm dia., 60 m	52055343	Bulb with shackle WW 1/4" for 6.0 mm dia.	52055335
Smart Butler fibreglass replacement tape 7.5 mm dia., 80 m	52055344	Bulb with shackle WW 1/2" for 7.5 mm dia.	52055367
Smart Butler fibreglass replacement tape 7.5 mm dia., 100 m	52055345	Bulb with castor WW 1/2"	52055368
Smart Butler fibreglass replacement tape 7.5 mm dia., 120 m	52055346	Tension head with eyelet WW 1/4" for 4.5 - 6 mm dia.	52055320
Smart Butler fibreglass replacement tape 9 mm dia., 40 m	52055353	Emergency repair set for fibreglass tape 4.5 mm dia.	52055324
Smart Butler fibreglass replacement tape 9 mm dia., 60 m	52055354	Emergency repair set for fibreglass tape 6 mm dia.	52055336
Smart Butler fibreglass replacement tape 9 mm dia., 80 m	52055355	Emergency repair set for fibreglass tape 7.5 mm dia.	52055375
Smart Butler fibreglass replacement tape 9 mm dia., 100 m	52055356	Emergency repair set for fibreglass tape 9 mm dia.	52055376
Smart Butler fibreglass replacement tape 9 mm dia., 120 m	52055357	Emergency repair set for fibreglass tape 11 mm dia.	52055377
Smart Butler fibreglass replacement tape 9 mm dia., 150 m	52055358		
Smart Butler fibreglass replacement tape 11 mm dia., 150 m	52055363		
Smart Butler fibreglass replacement tape 11 mm dia., 200 m	52055364		
Smart Butler fibreglass replacement tape 11 mm dia., 250 m	52055365		
Smart Butler fibreglass replacement tape 11 mm dia., 300 m	52055366		
Starter and end bushing WW 1/4" for fish tape 4.5 mm dia.	52055321		
Starter and end bushing WW 1/4" for fish tape 6.0 mm dia.	52055333		
Starter and end bushing WW 1/2" for fish tape 7.5 mm dia.	52055369		



### Easy Roller cable drum unwinder

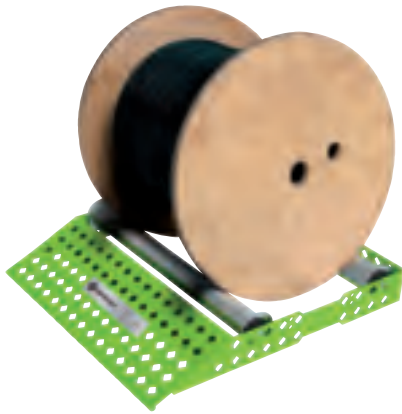
- ▶ Unique, user-friendly design
- ▶ 30 % less weight
- ▶ Ramp with shallow incline

#### Characteristics

- Light - 30% less weight
- Easy loading and unloading of heavy cable drums thanks to the shallow inclined ramp
- Rollers with integrated side guides
- Possible to fit to the cable drum diameter

#### Suitable for

- Large and small cable drums
- Width 530 mm, 200 kg carrying capacity
- Width 670 mm, 250 kg carrying capacity



Item	Dimension mm	Width mm	Part No.
Standard	530 x 570 x 90	530	<b>52055383</b>
Wide	670 x 605 x 95	670	<b>52055384</b>

### Rope for cable puller 6800-22 CE

#### Characteristics

- Breaking strength approx. 14.2 t
- Rope diameter 22 mm
- Rope on rope stand



Item	Part No.
Rope for cable puller 6800-22 CE, 91 m	<b>50341367</b>
Rope for cable puller 6800-22 CE, 182 m	<b>50341375</b>
Rope for cable puller 6800-22 CE, 365 m	<b>50341383</b>
Rope stand for ropes 91 m and 182 m	<b>50343629</b>

## Tray type sheaves for cable puller 6800-22 CE



### Characteristics

- Steel frames with forged eyelet 25 mm
- Sheaves from aluminium alloy with self-lubricating bearings
- Max. rated capacity 3.6 t
- Tool support/hanging ring (Carabiner)

External diameter mm	Internal radius mm	Width mm	Weight kg	Part No.
300	100	125	12	<b>50008722</b>
460	180	150	20	<b>50008730</b>
600	250	165	30	<b>50008749</b>

## Platform-type sheave 125 mm

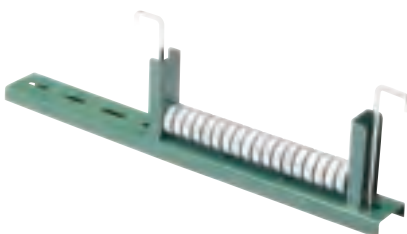


### Characteristics

- Sheaves from aluminium alloy
- Self-lubricating bearings
- Steel frames for mounting to cable ducts up to 50 mm thickness
- Extremely robust

Length mm	Width mm	Weight kg	Part No.
300	125	5	<b>50153323</b>
560	125	8	<b>50190946</b>

## Platform-type sheave



### Characteristics

- Steel ball-bearings
- Steel frames
- Mounting slots
- Universal mounting brackets

Part No.	Version	Width of cable conduit mm	Weight kg
<b>50273833</b>	Straight	300 - 450	3.6
<b>50273841</b>	Straight	500 - 600	4.5
<b>50273868</b>	Straight	600 - 760	5.9
<b>50273884</b>	Radius	300 - 450	5
<b>50273892</b>	Radius	500 - 600	5.4
<b>50273906</b>	Radius	600 - 760	5.9

## Pulling grips Junior, closed



### Characteristics

- Single weave, galvanized steel mesh with flexible pulling eyelet

### Suitable for

- The pulling-in of small diameter cables
- For manual pulling of feed lines in pipes and cable ducts

Part No.	Length of mesh mm	Eye length mm	For cable diameter mm	Max. pulling force kN
<b>50305964</b>	110	83	5 - 6	0.3
<b>50305840</b>	110	83	7 - 9	0.4
<b>50305867</b>	180	96	10 - 12	0.8
<b>50305883</b>	220	110	13 - 15	1.1
<b>50305905</b>	255	130	16 - 18	1.7
<b>50305921</b>	255	146	19 - 25	2.4
<b>50305948</b>	300	165	26 - 31	3.4

## T-Basket type pulling grips, closed



### Characteristics

- Double weave galvanized steel mesh with flexible pulling eyelet

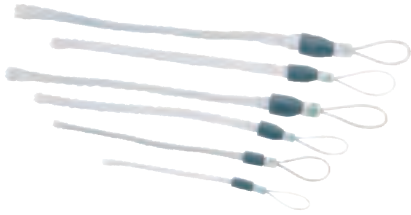
### Suitable for

- Medium-weight pulls in pipes and cable ducts

Part No.	Length of mesh mm	Eye length mm	For cable diameter mm	Max. pulling force kN
<b>50305581</b>	535	200	13 - 15	4.0
<b>50305603</b>	610	200	16 - 18	4.9
<b>50305620</b>	610	230	19 - 25	6.0
<b>50305646</b>	610	230	26 - 38	8.7
<b>50305662</b>	610	280	39 - 50	14.5
<b>50305689</b>	610	300	51 - 63	16.4
<b>50305700</b>	610	300	64 - 76	21.7
<b>50305727</b>	610	360	77 - 88	21.7
<b>50305743</b>	660	360	89 - 100	27.5
<b>50305760</b>	915	230	19 - 25	6.0
<b>50305786</b>	915	230	26 - 38	8.7
<b>50310100</b>	915	280	39 - 50	14.5
<b>50305808</b>	915	300	51 - 63	16.4
<b>50310127</b>	915	300	64 - 76	21.7
<b>50305824</b>	915	360	77 - 88	21.7
<b>50310143</b>	1020	360	89 - 100	27.5

Use a pulling grip so you don't have to strip the cable before it is pulled in! A cable grip allows you to pull with greater force. This prevents tapering of the cross-section.

## Pulling grip set, closed



### Characteristics

- Set of the most important pulling grips for the most frequently required pulling operations

Part No.	Diameter mm
<b>50307584</b>	7 - 31
<b>50314823</b>	19 - 50
<b>50314831</b>	51 - 76
<b>50314840</b>	19 - 76

## Pulling grip, open



### Characteristics

- Single weave, galvanised steel netting mesh with bar closure
- Offset flexible eyelet

### Suitable for

- Easy and straight pulls when the cable end is not available

Part No.	Length of mesh mm	Eye length mm	For cable diameter mm	Max. pulling force kN
<b>50306588</b>	150	175	13 - 15	1.3
<b>50310240</b>	200	175	16 - 18	1.6
<b>50306600</b>	250	175	19 - 25	1.9
<b>50310267</b>	300	200	26 - 31	3.0
<b>50306626</b>	350	200	32 - 38	4.0
<b>50310283</b>	380	230	39 - 44	5.1
<b>50306642</b>	400	250	45 - 50	6.7
<b>50310305</b>	480	250	51 - 63	8.0
<b>50306669</b>	500	250	64 - 76	9.7
<b>50310321</b>	530	300	77 - 88	10.6
<b>50306685</b>	600	300	89 - 100	10.6